

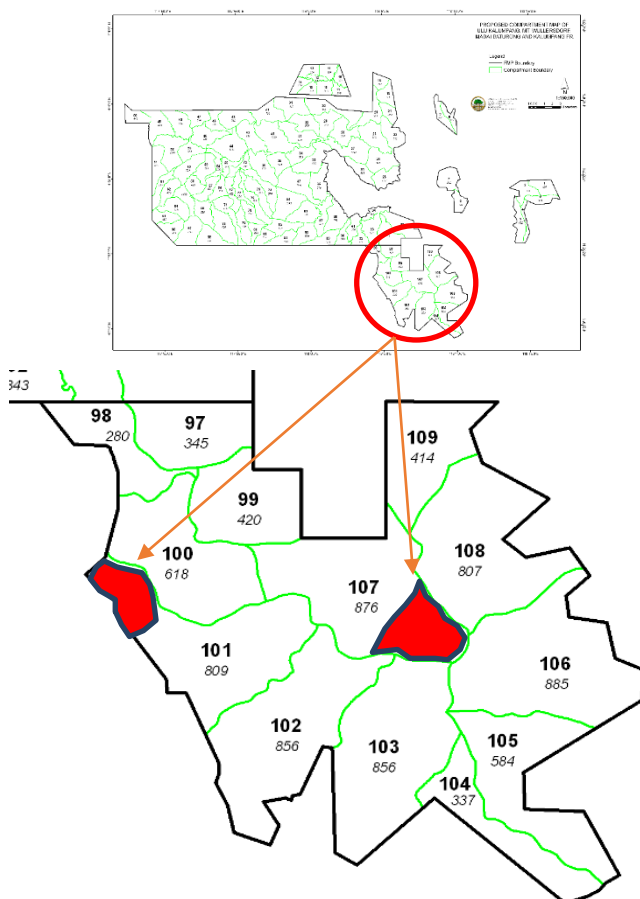
SILVICULTURE TENDING OPERATION 2019 – 2020

Treated Area (2019 – 2020)			
No	Forest Reserve	Location/ Compartment	Treated Area
1.	HS Mt. Wullersdorf	CPT 101, 107	529 Ha
2.	HS Madai Baturong	CPT 10,11,12,15,16,17	1,867 Ha
3.	HS Mt. Wullersdorf	Cpt 100	529 Ha

TOTAL SILVICULTURAL TREATED AREA 2012 - 2020

Table 2: Treated Area (2012 - 2020) - additional compartment

No	Forest Reserve	Location / Compartment	Treated Area (Ha)
1	HS Madai Baturong	Binuang	450
2	HS Kalumpang VJR 107D	Sapang	300
3	HS Ulu Kalumpang	Sg. Mantri	125
4	HS Mt. Wullersdorf	Checkpoint	125
5	HS Ulu Kalumpang	CPT 30, 31, 36, 41, 42, 46, 47 & 50	6,746
6	HS Mt. Wullersdorf	CPT 103, 104, 105, 106, 106A, 108 & 109	3,041
7	HS Mt. Wullersdorf	CPT 101, 107	529 Ha
8	HS Madai Baturong	CPT 10,11,12,15,16,17	1,867 Ha
9	HS Mt. Wullersdorf	Cpt 100	529 Ha
Total			13,712



Map 4: Silviculture Treatment at Mt. Wullersdorf Forest Reserve

PICTURES: SILVICULTURE TENDING OPERATION 2019



Pict. 13 & 14: Silviculture treatment area in Mt. Wullersdorf FR by DISAMODRA ENTERPRISE



Pict. 15 & 16: Ground Inspection - Silviculture treatment area in Mt. Wullersdorf FR (Compt 101)



Pict. 17 & 18: Ground Inspection - Silviculture treatment area in Mt. Wullersdorf FR (Compt 107)

PICTURES: SILVICULTURE TENDING OPERATION 2019

Fig.2A

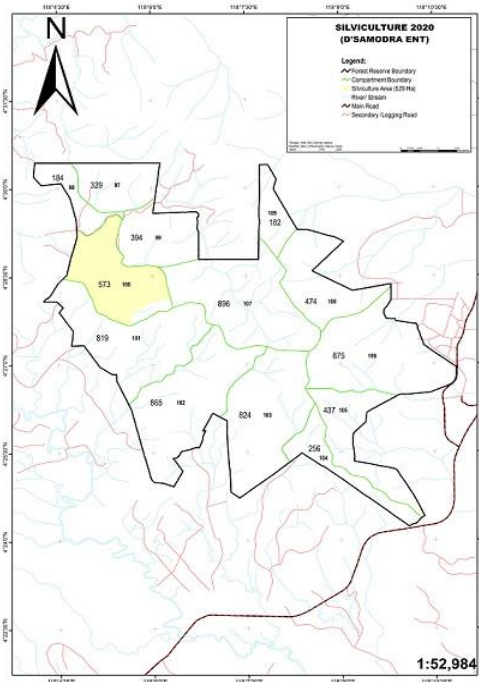


Fig.2B

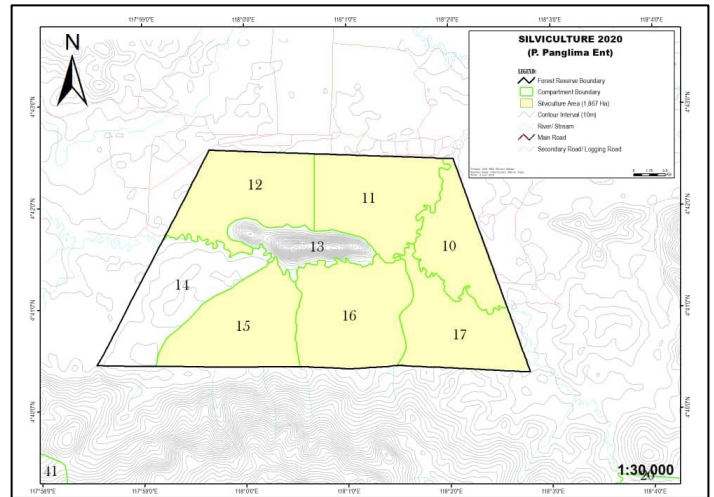


Figure 2A. Map showing the completed silviculturally treated area in Mt Wullersdorf FR Class 1 and; **2B** Map showing the completed silviculturally treated area in Madai Baturong FR VJR107F Class VI within the UKW SFM Project, Sabah

6A



6B



6C



6D

